



England

RECONNECT

case study

East of England

Presented by:
Emma Giles & Chelle Farnan



What is RECONNECT?

RECONNECT is a care after custody service that seeks to improve the continuity of health care of vulnerable people leaving prison.

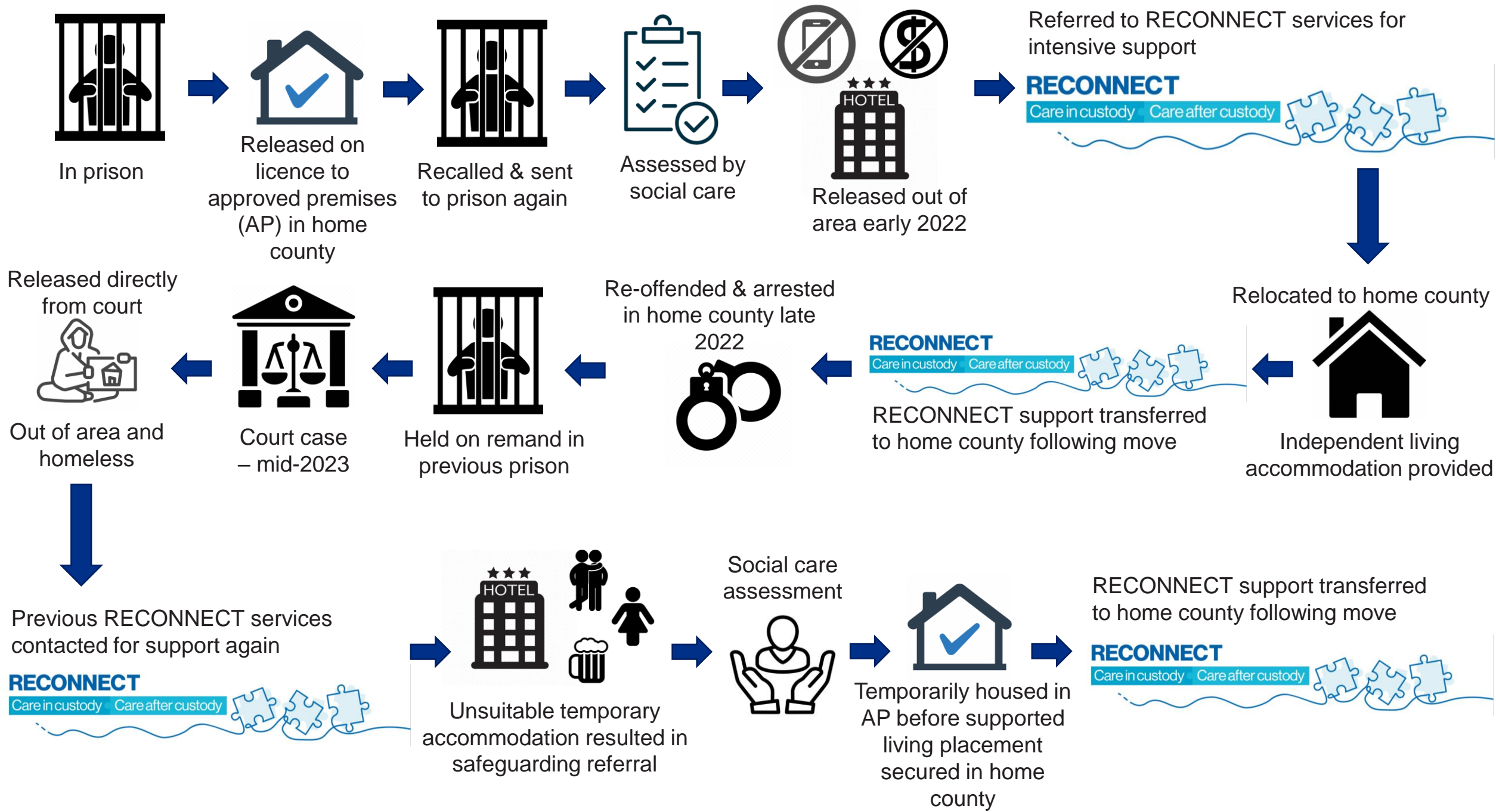
- Supports prison leavers with healthcare needs who are unlikely to engage on their own.
- Liaison, advocacy and signposting service.
- Focus on healthcare & must not duplicate other services.
- Support may start 3-months before release & last for 6 months post-release.
- Commissioned by NHS England.
- Different models & providers exist across the region.

Case background

A highly complex and vulnerable person

- Aged 60+
- Problems with hearing and eyesight.
- Challenges with reading and writing.
- Physical and mental health issues.
- Neurodivergence – queried LD & dementia.
- Alcohol misuse.
- Challenges with daily living and money management.
- Registered sex offender.








Repetition of events

2 similar events happened within a year:

- On both occasions he was released to the same out of area location, away from his hometown and support networks.
- There was no pre-release preparatory work in his area of release.
- He was housed in unsuitable premises and exploited by others around him.
- Lack of communication with relevant services.
- Both times support was led by the local RECONNECT teams.



**“A perfect storm trapped in a massive gap
in the system.”**

**Quote taken from an attendee at
the recent Round Table event**



Reflective practice

Round table event held with partners to review events in detail.

- Invited all partners to reflect.
- Discussed what happened, what went wrong and what could be learnt.
- Case study developed post-event to share learning wider:
 - All RECONNECT teams
 - Local partnership boards
 - SAF ALL
 - National H&J safeguarding team

Missed opportunities





Early recognition and referral

- Prison is a protected environment which can disguise people's needs.
- Healthcare assessments did not identify his vulnerabilities.
- Full historic information was not shared.



Pre-release planning

- Issues with releases from court and 'time served' prisoners.
- The correct community services and local Probation team not informed.
- Out of area releases can make planning more difficult.
- No emergency or contingency planning had taken place in case of his release.



Intra-agency and multi-agency collaboration

- Multiple emails from multiple sources.
- Lack of interoperability of systems.
- No one had the full picture.
- RECONNECT convened an MDT meeting a few days after receiving their referral.

Lessons learnt



Early recognition and referral

- Consider executive capacity.
- Referrals and assessments should be completed early.
- Recognise housing needs for potential time served prisoners early.



Pre-release planning

- Involvement of RECONNECT and other community services prior to release.
- Understand where prisoners are likely to originate from and improve links to these areas.
- ‘Duty to refer’ should be completed for those at risk of homelessness.
- Possible emergency planning.
- Needs and vulnerabilities to be flagged to courts.



Intra-agency and multi-agency collaboration

- Early professionals' meetings and strategic planning – particularly for 'time served' prisons or those with complex needs.
- Clear record keeping.
- Notes need to be compared between agencies.
- Advocacy for the prison leaver.

Questions & Discussion



What would you do?

- What would you do if someone with these needs presented to your service?
- Do you know who you could contact for support?

Thank You